



GENERAL

The Mercian T40 or T80 Sectional Overhead door is manufactured to specific requirements to suit regular-shaped openings. Particularly suitable where reliable repetitive operation is required. Seals at soffit, cill and panel interfaces provide greater thermal efficiency. Various modes are available to suit a large range of building applications. Corporate colour schemes can be incorporated to give excellent aesthetics.

Maximum opening size: (dependent on mode used) 8000mm wide x 6250mm high

Special features of this range are:

- Individual panels can be replaced if damaged
- Wide choice of finishes/colours including: Plastisol Leathergrain, Standard Polyester finish, Colorcoat HPS200
- Rapid installation by factory trained engineers
- Large range of factory fitted extras to suit customers specific requirements



COMPOSITION

Panels Constructed from closed cell in-situ expanded polyurethane foam. Gives typical 'U' value of: 0.24w/m²/°C per panel for 80mm thick panels; 0.60w/m²/°C per panel for 40mm thick panels. (Values incl the effect of thermal bridges at panel joints).

Bottom Panel Rubber seal on bottom for weather resistance.

Side & Back Tracks Profiled steel section which offers minimum resistance to the movement of the rollers. Braced at high level for added strength.

Spring Assembly Combinations of stress tested torsion springs mounted on steel shaft supported by roller bearing plates. Spring effort is transmitted via cable cones and steel cables. This ensures smooth consistent operation over the complete door range.

Locking Internal lockable fitted shootbolt for customers own padlock. (Microswitch interlocked on powered doors)

Accessories

The following are available as factory fitted extras or as supplementary items at a later date:

- Electrical operation to give full compliance with current EC directives and Regulations 5 and 18 of the Health & Safety "Workplace Health, Safety & Welfare" Regulations 1992. For available options please ask for our leaflet 'CK 001'
- Vision panels
- Wicket doors (Factory fitted only)

OPERATION The three methods of operation are:

Manual Pull Cord T40P For doors up to 3000mm x 3000mm. Lift and push up with pull cord control over ascent and descent.

Handchain T40C Operation is by endless handchain through mild steel gears to give ease of operation together with rapid response from fully closed to fully open.

Electric operation T40E Preferred for openings over 4000mm x 4000mm. A 440 volt 3 phase motor with limit switches, reversing contactor starter and provision for rapid conversion to emergency manual operation is used. May be specified as original equipment or as a conversion at a later stage.

Note! All Mercian sectional overhead doors are carefully counter balanced for ease of operation, but consideration should be given to frequency of use when deciding on the provision of handchain or electrical operation.



Assessed to ISO 9001:2008
Certificate number 355

Mercian Industrial Doors is a trading name of Mercian Shutters Limited
Pearsall Drive Oldbury West Midlands B69 2RA Tel: 0121 544 6124
www.merciandoors.co.uk sales@merciandoors.co.uk

Mercian Industrial Doors has a policy of continuous product improvements and reserve the right to amend specifications and details without notice.

©Mercian Shutters 2013





MODES AVAILABLE

Standard Lift The most common application due to its simple design and easily constructed structural opening. Particularly suitable where headroom above the door in the open position is restricted. The back tracks should follow the roof slope where possible, or be inclined upwards from the opening height on a minimum pitch of 1 in 25.

High Lift Where a greater degree of internal clearance to the underside of the open door is required e.g. for fork lift truck operations. The back tracks should follow the roof slope where possible, or be inclined upwards from the opening height on a minimum pitch of 1 in 25.

Vertical Lift Particularly useful where roof or purlin loadings are critical, or a completely uncluttered internal aspect is required.

SITWORK

Construction Openings may be formed in masonry, steel, concrete or timber. The building structure must be suitable to support the loadings imposed by the door. Our technical staff will be happy to advise on specific requirements.

SUPPLY

Delivery The sectional doors are delivered to site on Mercian transport. Delivery periods are flexible to meet the demands of our customers but usual delivery times are 3/4 working weeks from settlement of details.

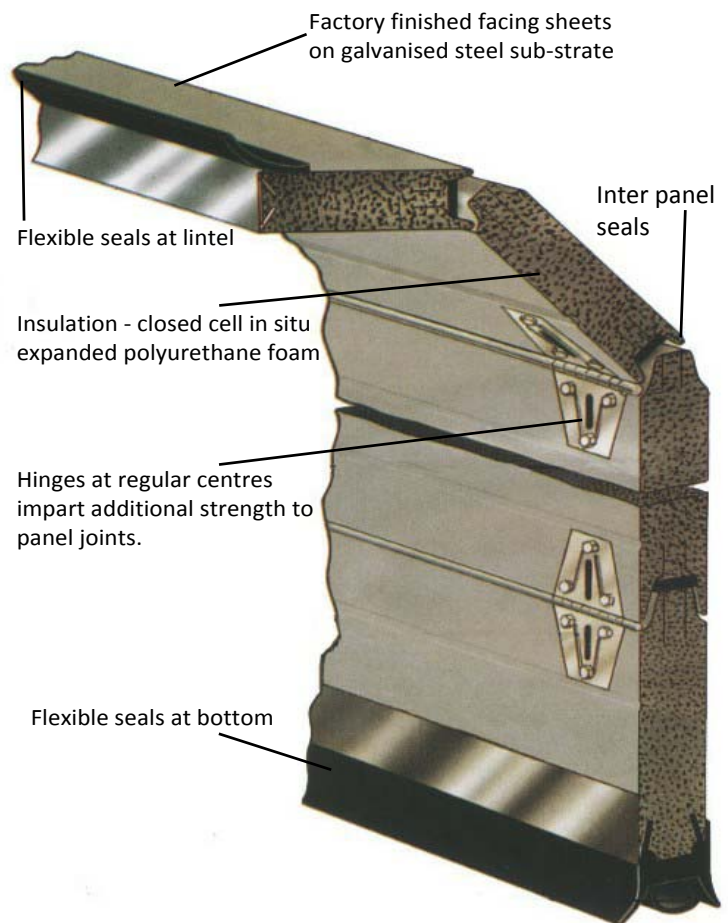
Technical For further information or technical advice please contact our Technical Sales Department at the above address.

INSTALLATION & MAINTENANCE

The company has teams of specially trained installation engineers and offers a comprehensive programme of preventative maintenance, upgrade and emergency repair services to ALL types of industrial doors. Free survey and quotation service. Call us for an obligation free site visit.

Optional Vision Panels:

1. 675 wide x 368 high (standard)
2. 620 wide x 180 high (polycarbonate security)



Assessed to ISO 9001:2008
Certificate number 355

Mercian Industrial Doors is a trading name of Mercian Shutters Limited
Pearsall Drive Oldbury West Midlands B69 2RA Tel: 0121 544 6124
www.merciandoors.co.uk sales@merciandoors.co.uk

Mercian Industrial Doors has a policy of continuous product improvements and reserve the right to amend specifications and details without notice.

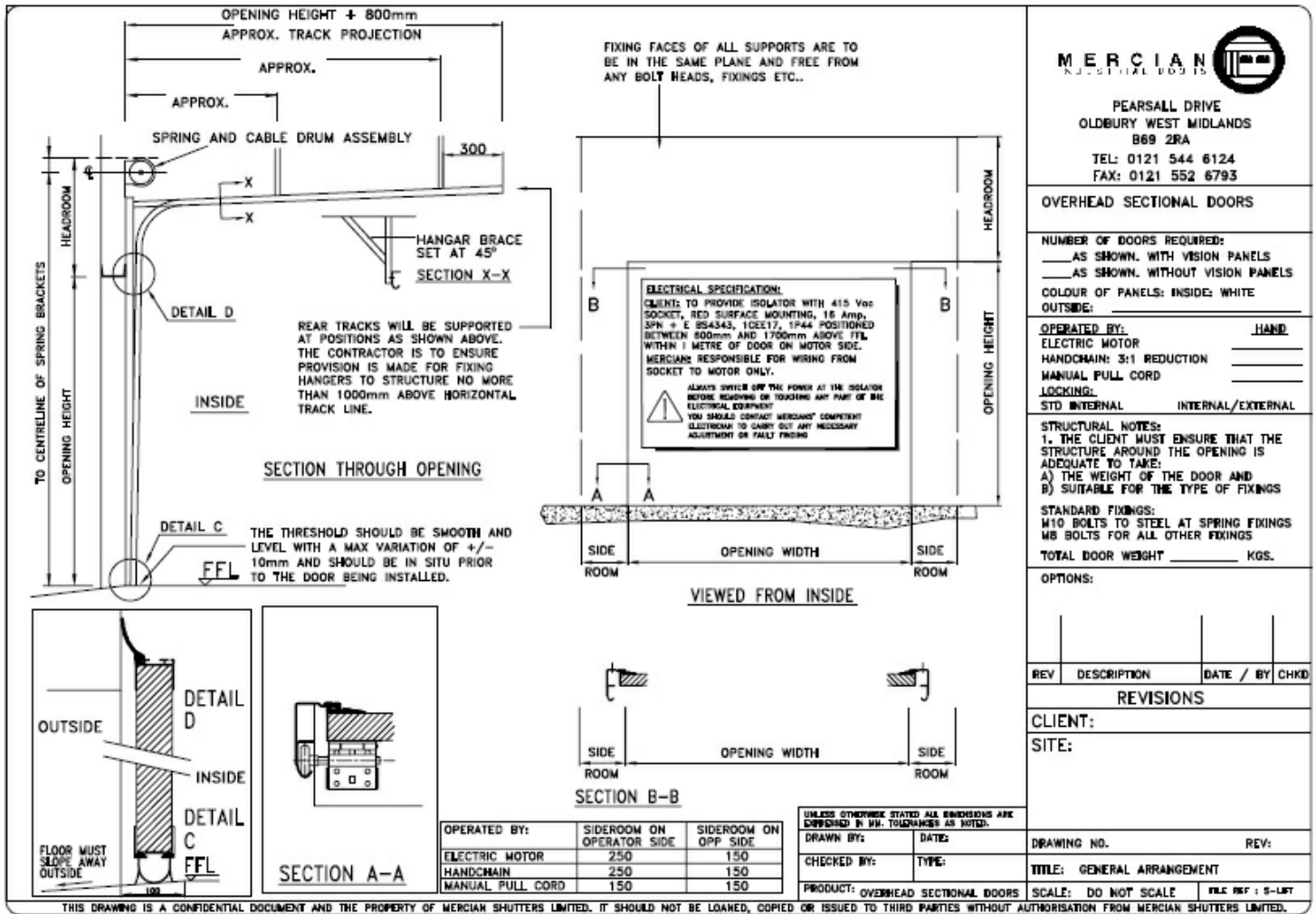
©Mercian Shutters 2013



Door & Hardware
Federation
raising standards



T40 Sectional Overhead Doors



PEARSALL DRIVE
OLDBURY WEST MIDLANDS
B69 2RA
TEL: 0121 544 6124
FAX: 0121 552 6793

OVERHEAD SECTIONAL DOORS

NUMBER OF DOORS REQUIRED:
 AS SHOWN, WITH VISION PANELS
 AS SHOWN, WITHOUT VISION PANELS
 COLOUR OF PANELS: INSIDE: WHITE
 OUTSIDE:

OPERATED BY: HAND
 ELECTRIC MOTOR _____
 HANDCHAIN: 3:1 REDUCTION _____
 MANUAL PULL CORD _____
 LOCKING:
 STD INTERNAL _____ INTERNAL/EXTERNAL _____

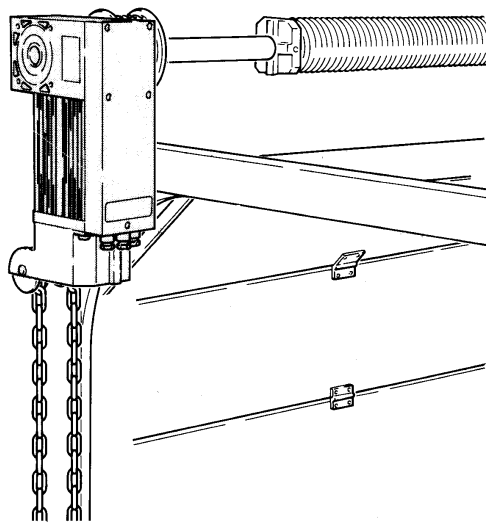
STRUCTURAL NOTES:
 1. THE CLIENT MUST ENSURE THAT THE STRUCTURE AROUND THE OPENING IS ADEQUATE TO TAKE:
 A) THE WEIGHT OF THE DOOR AND
 B) SUITABLE FOR THE TYPE OF FIXINGS
 STANDARD FIXINGS:
 M10 BOLTS TO STEEL AT SPRING FIXINGS
 M8 BOLTS FOR ALL OTHER FIXINGS
 TOTAL DOOR WEIGHT _____ KGS.

OPTIONS:

REV	DESCRIPTION	DATE / BY	CHKD

REVISIONS

CLIENT:
 SITE:



Mercian Industrial Doors is a trading name of Mercian Shutters Limited
 Pearsall Drive Oldbury West Midlands B69 2RA Tel: 0121 544 6124
 www.merciandoors.co.uk sales@merciandoors.co.uk
 Mercian Industrial Doors has a policy of continuous product improvements and reserve the right to amend specifications and details without notice.
 ©Mercian Shutters 2013

